

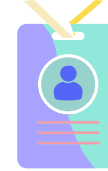
Assessment professional learning framework



Your
influence and
leadership

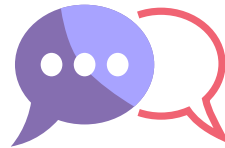


Your
knowledge
and skills



Your
professional
identity

You're able to **identify areas** in your practice where **assessment can be used effectively** and you're comfortable **describing key concepts in educational assessment** to others.



Knowledge
and
understanding



Reflections
on your
context

You're able to **compare the features and appropriateness** of different assessment approaches and **can identify and diagnose potential issues** with assessments that you use.

You've developed strategies for improving the quality of your assessments and you're able to use enquiries and research findings to investigate the effectiveness of assessment innovations.



Innovations
in your
practice



Development
of new
insights

You're able to **investigate how well your assessments are working** and understand **how changes influence outcomes and quality**, developing **new principles to guide your practice**.